

## GALLERY INFORMATION

Thank you for your interest in Pheasant Run Resort's art gallery. The Bourbon Street Gallery is located in the balcony area of Pheasant Run Resort's re-created New Orleans streetscape. In addition to the gallery, *our* Bourbon Street includes Thieves' Market (a fun gift shop), Ben & Jerry's ice cream shop, our recently renovated Swamp Arcade, Harvest Restaurant featuring seasonal cuisine of the region, and—our latest addition—Jambalaya Restaurant with New Orleans-inspired cuisine and entertainment.

If you have questions about the gallery, or you are interested in exhibiting your own artwork in our gallery, please contact Anne Riley, Marketing Assistant, at 630-524-5006.

If you're interested in purchasing a piece of artwork, please visit the front desk or dial "0" on a house phone for assistance.

### THE FINE LINE CREATIVE ARTS CENTER

6N158 CRANE ROAD  
ST. CHARLES, ILLINOIS 60175  
630.584.9443  
[www.fineline.org](http://www.fineline.org)



Hours:  
Open 7 days a week  
9:00 am—9:00 pm

Bourbon Street - 2nd floor  
Pheasant Run Resort  
4051 East Main Street

Phone: 630-524-5031  
Fax: 630.584.4693  
[cnelson@pheasantrun.com](mailto:cnelson@pheasantrun.com)  
[www.pheasantrun.com](http://www.pheasantrun.com)



ARTIST INFORMATION

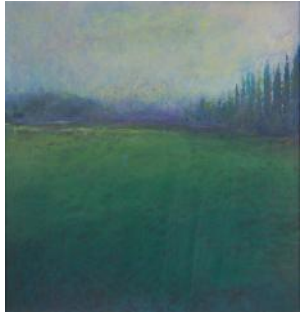
# Fran Stilwagner

“The Essence of Color”



*Swamp, Oil Pastel 18"x 24"*

# FRAN STILWAGNER



## ARTIST INFORMATION

One might call Fran an expressive Painter because her paintings result from her engagement with the media, the subject

*Tuscan Hillside, Oil Pastel 22"x 22"* matter and her own intentions and responses. "When I start I am open to the process. This process is interactive: my experience with the media and the subject influences the direction the piece will take"



*Turmoil, Oil Pastel 23"x 24"*

Currently Fran is working with oil stick and oil pastel. These two type of media provide exceptionally rich color.

"I can readily create subtle tones or bold vibrant hues. I love the tactile experience of these media as they are applied to board, paper or canvas." Fran explains, "I apply layers to the surface. I develop dimensions, as a sculptor might. I add and take away until I have an image that feels whole."



*City Lights, Oil Pastel 24"x 21"*



*Shadows, 23"x 24"*



*Springtime, Oil Pastel 24"x 24"*



*Le Table, Oil Pastel 28"x 30"*



*Antique Orange, Oil Pastel 20"x 21"*

"The rich color, texture and dimensionality of this technique allows a wide range of expression. I can create images that evoke what my mind constantly returns to : the color and subtlety of the artists I have viewed and studied."

"I want to create images that invite peaceful refuge. I paint a variety of subjects but I particularly like landscapes. They are unlimited, meaning that they are always changing. The light, the climate, and season; each aspect of the landscape is ephemeral-it is about to change. To catch a moment is to capture the essence of what nature is-a dynamic force that moves me deeply. Some of my work presents a more abstracted image as I seek to refine my understanding of this essence and communicate it to the viewer. I continue to work with both representational and abstract images to capture and communicate the essence and dynamism of life."

Fran is an award winning artist who has had shows throughout the Fox Valley area, Woodstock, Il and Mineral Point, Wisconsin.

Memberships: The Fine Line Creative Art Center  
The Oil Pastel Society  
The Naperville Art League  
Yellow House Artists

Fran can be contacted at  
[www.franstilwagner.com](http://www.franstilwagner.com)